



Trustees' Report
and
Accounts

for the period ended
31 March 2014

Contents

| | |
|--|----|
| Contents..... | 2 |
| Reference and Administration Detail..... | 3 |
| Structure, Governance and Management..... | 4 |
| Objectives and Activities of the Charity..... | 6 |
| Relationship with other Charities and Organisations..... | 22 |
| Plans for the Future..... | 23 |
| Financial Review..... | 25 |
| Trustees' responsibilities in relation to the financial statements..... | 27 |
| Independent Examiner's Report to the Trustees of Calvary Christian Fellowship..... | 28 |
| Statement of Financial Activities for the year ended 31st March 2014..... | 29 |
| Balance Sheet at 31st March 2014..... | 30 |
| Notes to the accounts 31st March 2014..... | 31 |

Reference and Administration Detail

| | |
|------------------------------|---|
| Period | 1st April 2013 to 31st March 2014 |
| Charity Name | Calvary Christian Fellowship (Preston) |
| Company limited by Guarantee | |
| Company Number | 07223694 |
| Charity Commission Number | 1135901 |
| Charity Principal Address | Ward Street Lostock Hall Preston PR5 5HR |

Trustees

Mr P Richardson (Chair)

Mr D Buckley

Mr Pete McDermott

Mr M Headley

Mr Phil McDermott

The existing trustees vote on the appointment of new trustees. The trustees both manage the charity and hold title to the charity's property.

Names and Addresses of Advisors

Bankers

CAF BANK Ltd
PO Box 289
West Malling
Kent
ME19 4TA

Auditor

John Fell
J A Fell and Company
White Cross
South Road
Lancaster
LA1 4XQ

Senior Staff Members

| Name | Position | Status |
|-----------------|------------------|-----------|
| Graham Hooke | Senior Pastor | Employed |
| Paul Jackson | Associate Pastor | Employed |
| Dorothy Barton | Elder | Volunteer |
| Stephen Whymark | Elder | Volunteer |
| Linda McDermott | Elder | Volunteer |

Structure, Governance and Management

Governing Document and Constitution

The charity is governed by the Declaration of Trust dated 1 December 1981 and is an unincorporated association. Since 1st November 2010 the organisation was, and will continue to be, governed by the Memorandum and Articles of Association of Calvary Christian Fellowship (Preston) incorporated as a company limited by guarantee in England on 14th April 2010.

Charity Trustees

The first Trustees are the 5 persons named above who were notified to Companies House as the first directors of the charity.

The number of trustees shall be not less than 3 and a fourth of the trustees shall retire by rotation at each annual general meeting.

The charity may appoint a willing person (subject to qualifications stated in the Memorandum and Articles of Association) to be a trustee.

Charity Trustee Induction and Training

Prior to appointment a candidate will be visited by a serving trustee to explain the role and responsibilities of a Charity Trustee. Publication CC3 "The Essential Trustee" guide will be provided along with the trust document, copies of the accounts and a description of the organisation of the charity. The candidate will also be made aware of the Charity Commission's website and of publications within the site.

Organisation of the Charity

The management of the charity splits into two groups:

1. Trustees (who are ultimately responsible for the charity meeting its charitable objectives)
2. Elders (including pastors)

The elders are responsible for the spiritual life, leadership and activities of the church. They continued to meet fortnightly at Elders' homes on Wednesday evenings, and held 21 meetings in 2013/14.

The trustees are responsible for those areas relating to the charity as a legal entity; specifically the financial, legal and employment matters. Trustees meet approx. quarterly on Friday evenings and met together 5 times in 2013/14.

The pastors and elders are responsible for the direction and spiritual welfare of the charity as a Christian church. As a team they take care of the church and decisions are usually made by consensus. The pastors and elders construct an annual budget, which is submitted to the trustees for approval.

The two groups meet together to discuss joint issues and to enable, where possible, unified decision making. They held one such meeting in March 2014 to discuss the possible rental of the Double Bridges Centre, owned by the Methodist Church.

The church relies heavily on volunteers to fulfil its ministries. Membership involves commitments to attend regularly, using gifts and abilities for the benefit of the church, giving sacrificially and supporting the leadership. Membership changed to Partnership in March 2014 (more details later in the report) but the commitments remain similar.

Risk Management

The major risks to the charity, as identified by the Trustees, have been considered and appropriate action taken to mitigate those risks.

New activities are risk-assessed and where appropriate notified to our insurers to ensure appropriate cover is available. The trustees try to attend non-standard activities to ensure health and safety issues have been considered. The site supervisor monitors the use of the church and notifies issues via the weekly staff meetings.

Safeguarding Children

The Church has a Safeguarding Children Policy (previously called a Child Protection Policy) which all members working with children are required to read. This was rewritten at the end of 2010, and is supported by a detailed induction pack for anyone new starting to work with children or vulnerable adults. (More information later in the report)

Objectives and Activities of the Charity

Objects as set out in Memorandum and Articles of Association

(a) to advance the Christian Faith in accordance with the Statement of Beliefs appended to the Memorandum and Articles of Association in Preston, Lancashire and in such other parts of the UK or the world as the Trustees may from time to time think fit and to fulfil such other purposes which are exclusively charitable according to the law of England and Wales and are not connected with the charitable work of the charity;

(b) to relieve sickness and financial hardship and to promote and preserve good health by the provision of funds, goods or services of any kind, including through the provision of counselling and support in such parts of the UK or the world as the Trustees from time to time may think fit.

Public Benefit

The trustees have considered the guidance of the Charity Commission on Public Benefit in planning the activities of the charity.

Aims

The mission statement of our church is: 'Making Disciples – people who love God and others.'

The vision of the church is pictured as a **Diamond** which is multifaceted, reflecting the light of Christ in many directions through the ministries and members of the church, because of our belief that every individual is unique and matters to God. Various characteristics of a diamond exemplify key values of the church.

Our objectives are based around a three-step process: REACH, RESTORE and RELEASE.

REACH people for Christ.

Every member is reaching out to one friend who isn't yet a Christian

RESTORE people to a right relationship with God, through Christ.

Every member is taking opportunities to tell their story of salvation to see others restored.

RELEASE people to realise their full potential in Christ.

Every member is clear on their gifts and is trained, encouraged and released to use those abilities for the benefit of the church community and wider community - locally, nationally and globally.

Employed Staff

Graham Hooke and Paul Jackson continued to serve the church and were paid as full-time Senior and Associate Pastors respectively.

Calvary Christian Fellowship
Trustees' Annual Report and Accounts 1 April 2013 to 31 March 2014

Jill Jackson continued to work in paid part-time employment as the CAP Centre Manager and Debt Advisor.

Sarah Downie continued to work in paid part-time employment as an additional CAP Debt Advisor.

Lee-James Warren was appointed from September as a paid part-time Youth Worker in training. His salary was funded by a combination of gifts and grants.

Karen Whaite (Gilbert) continued as a part-time paid Administrator.

Billy Garnett continued as a part-time paid Site Supervisor.

Terry Hartley continued as a part-time paid Cleaner. Terry retired because of poor health in December 2013 and her position has been filled by two volunteers.

Staffing Review

As a number of changes had occurred at CCF in terms of its involvement within the community and the ministries it provides, a review of staffing arrangements (including levels of remuneration) was carried out by the Chair of Trustees during 2013 to ensure that CCF and its current and planned activities could be adequately and efficiently supported by its paid staffing structure. Following the conclusion of the review, which included a job evaluation exercise, the Trustees approved its implementation with effect from 1st April 2014.

Work Streams - A Re-Organisation

A major re-organisation of the Church's activities took place during 2013.

All activities were divided between seven new Work Streams with Pastors, Staff & Elders being given responsibility for each stream as follows:

The Senior Pastor, Graham Hooke, took responsibility for the following three streams with support from staff and elders as stated:

TEACHING & WORSHIP

DISCIPLESHIP PATHWAYS

Elder: Linda McDermott

INTERNATIONAL MISSION

The Associate Pastor, Paul Jackson, took responsibility for the following three streams with support from staff and elders as stated:

COMMUNITY MISSION

Debt Advisor: Jill Jackson

Debt Advisor: Sarah Downie

Elder: Steve Whymark

MISSIONAL WORSHIPPING COMMUNITIES

Elder: Dorothy Barton

YOUTH & CHILDREN

Youth Worker: Lee-James Warren

Paul Jackson line-manages Lee-James Warren, Jill Jackson

Jill Jackson line-manages Sarah Downie

A seventh stream, **Operations**, was recognised as supporting all the work of the other six streams and, in an ideal scenario, would be headed up by an Operations Manager. In the absence of a suitable person the Pastors shared responsibility for this seventh stream:

OPERATIONS

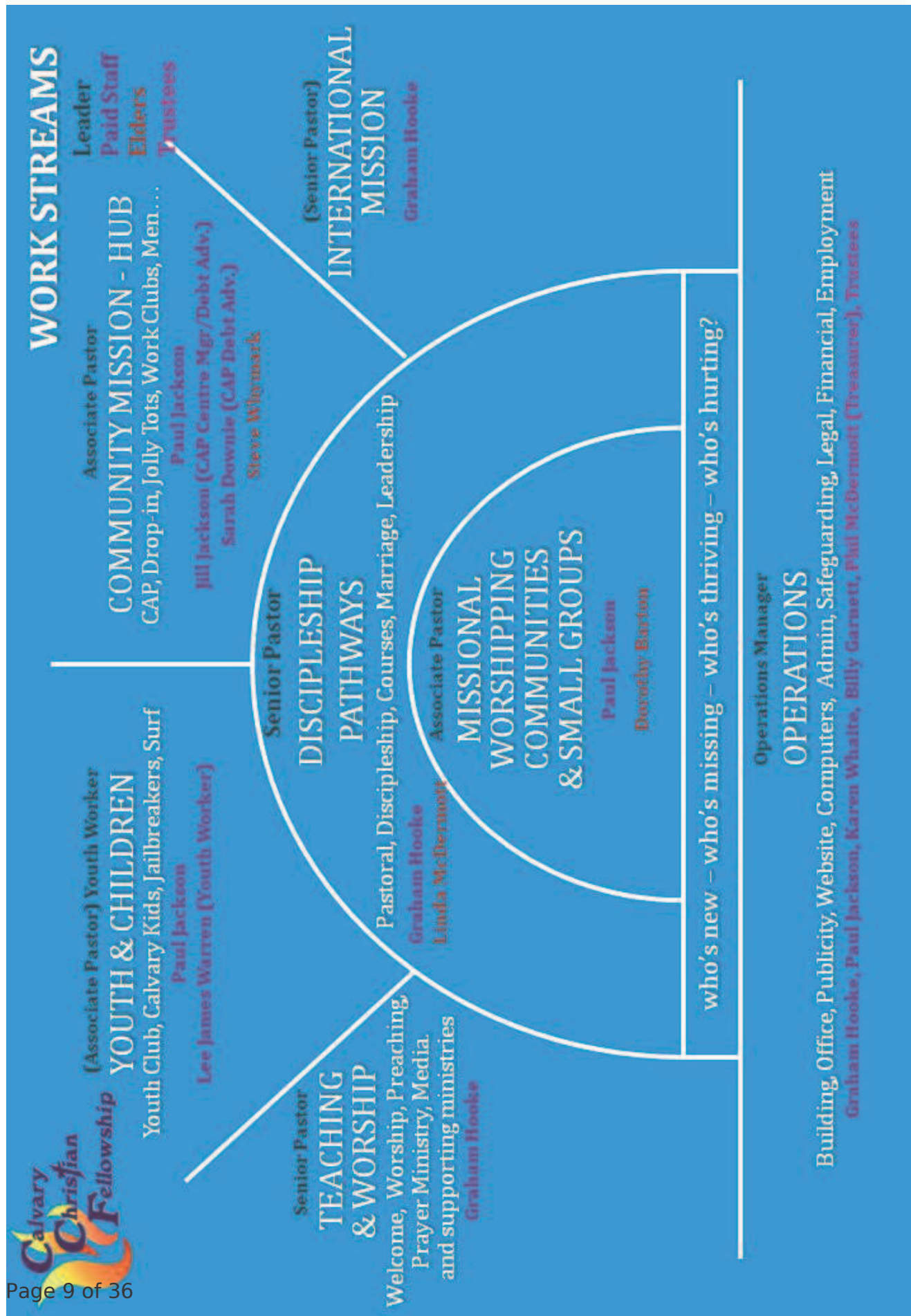
Administrator: Karen Whaite

Site Supervisor: Billy Garnett

Cleaner: Terry Hartley

Graham Hooke line-manages Karen Whaite and Billy Garnett.

All groups and activities of the church were managed and supported within the above Work Streams framework. This framework is displayed in the following diagram.



1. MISSIONAL WORSHIPPING COMMUNITIES

During 2013/14 the church continued a process of seeking to grow through the development of Missional Worshipping Communities.

Missional Worshipping Communities are potentially subsets of the whole church being communities of up to approximately 50 people focussed on a mission to gather a community of people around a specific feature: age, interest, location, stage of life etc.

Each Missional Worshipping Community (MWC) is expected to feature a balance of activities based around a triangle of UP IN OUT.

UP - connecting with and worshipping God

IN - relating and growing together as disciples of Jesus Christ

OUT - reaching out to others in mission

The development of *Missional Worshipping Communities* is one of the main ways the church engages in outreach. As of March 2013 CCF has two established MWCs and a number of other emerging communities.

Established MWC's

M2E (Ministry to the Elderly) has been running for a number of years and meets monthly on a Sunday afternoon for a short service of worship, monthly on a Tuesday for a "Brew time" usually featuring a speaker on a topic of interest and monthly on a Thursday for a Film Club. The M2E community numbers between 25 and 30 people

Splat - Messy Church led by Miriam Grave and a team, has continued meeting on the third Saturday of each month. Splat is for all generations and mixes creative activities, worship, teaching and a simple meal together. Approximately 120 different people have attended Splat, average monthly attendance is around 50- 55 people.

Emerging MWCs

The **20s/30s** community, co-ordinated by Ruth Porter, is developing on a relational basis with occasional events and activities taking place to draw together those in their 20s and 30s.

In October 2013, Graham & Ruth Hooke launched the idea of a Choir for Justice called **Mercy People**. Following auditions (Jan - Mar 2013) the choir will commence rehearsing in April 2014.

Arise is a small community focussed on supporting women. This community meets monthly.

In addition to these emerging Missional Worshipping Communities the church's activities to reach men, and also some of it's debt support are increasingly following the principles of MWCs and small communities are beginning to develop.

Alongside Missional Worshipping Communities the church also has 10 small groups that provide a place for people to meet and grow in faith.

2. DISCIPLESHIP PATHWAYS

Discipleship Pathways Team

The Senior Pastor gathered a team of 8 people (DP Oversight Team) together to work with him in the development of this stream of church life. We recognise four key groups of people in church life, those who are **New, Missing, Hurting and Thriving**. For people in each of these groups their life experiences may currently be challenging, such that they benefit from additional pastoral support from the church, over and above the support and friendship offered in SGs and MWCs. These are times for potential growth in discipleship.

The DP team met together first in November and on two subsequent occasions in 2013/14. Their initial work focussed on:

1. Establishing better procedures for helping new people become part of church.
2. Producing a booklet of Guidelines for leaders, looking at boundaries, confidentiality and when to refer people on re. difficult or potentially dangerous pastoral care issues
3. Setting up a regular Prayer Clinic opportunity when people can book private opportunities to receive prayer support in a different and quieter context than Sunday morning services or MWC/SG meetings.

Active steps have been taken in all three of these areas, with plans in place for 2014/15.

The DP team will be focussing next on looking at **Discipleship Courses** and how they are best led, managed and accessed. Courses run during 2013/14 are listed below.

One of the elders, Linda McDermott, has accepted an appointment as the **Pastoral Co-ordinator**. She meets with the Senior Pastor regularly to oversee and action pastoral support where required. The next stage is to develop a small team of people to provide pastoral support working with Linda.

Pastoral care of members continues to take place through SGs and MWCs, with the individual members of the church involved in **mutual support** for one another.

The role of the employed pastors of the church is primarily a leadership and oversight role but both also involve themselves in pastoral care and prayer for members, as needs arise, particularly in emergency situations where hospitalisation is involved.

Counselling of a few people continues to be undertaken by three appropriately trained counsellors, all of whom are members of the DP oversight team.

The **Prayer Ministry Team** ensure that prayer is available at each Sunday morning service. People can also put prayer requests on a prayer chain. George and Joan Thomas have responsibility for Prayer Ministry and meet regularly with their team.

Courses

1. **The Partners and Friends** course has replaced the previous **Vision, Values and Involvement** course. (More about this in Teaching and Worship Section following.) The first course was run in Jan/Feb 2014, led by Graham Hooke along with Phil & Linda McDermott, and hosted at the home of another partner of CCF. It was followed by one extra session for a meal and an interview, addressing what it means to be a partner of Calvary Christian Fellowship.

15 people took part in the course including 6 people who were either leaders/hosts/drivers. 7 people decided to become partners, 1 chose to become a friend and 1 was only able to attend one session and will complete the course later.

2. The **Discovery Steps** course was run by M2E on a monthly basis with about 7 people attending. This is a basic introduction to the Christian faith particularly focussed on CAP clients

3. **CAP Money** is a 3 week course that encourages and enables people to get control of their finances, led by. A course was run in October 2013 with 4 people attending. Sarah Downie, Chris Hebson and Nigel Stewart are all trained CAP Money coaches. Lee-James Warren passed his CAP Money coach training in November 2013.

4. Two **Baptism preparation** courses were run during this period.

5. **Marriage Preparation.** Graham & Ruth Hooke led one couple through a Marriage Preparation course of 5 sessions. They were married in July 2013.

6. **Healing Choices**, initiated to help people through issues and difficulties of life was led by Bev Redman during the Autumn of 2013 and attended by 8 people.

7. **Freedom in Christ** was not run this year.

8. A **Men's Alpha** course, led by Ian Shepherd and Derrick Bannister, took place during Spring 2013 and was attended by up to 10 men.

In addition Paul Jackson led a small Alpha Course with just 4 people. This started in March 2014 and will run informally through spring and summer.

Other Events and Activities

One **Wedding** was held at CCF in July 2013.

Two **Funerals** were held during the period.

A large group of adults and children from CCF attended the final Newark **New Wine summer event**, with celebrations, seminars and workshops for teaching and inspiration.

Additional Church Events are listed in the Community Mission section.

3. TEACHING & WORSHIP

Four teaching series were covered at Sunday morning church services during 2013/14; **Covenant & Kingdom, Justice & Mercy, Partners & Friends and A Matter of Life...(John's Gospel)** with occasional other one-off topics. Talks were supported by small group activities published on most Sundays in the weekly Bulletin and also accessible online through our church website.

i. Sunday Mornings

The Sunday morning service has continued to be a significant feature of church life and is open to all comers. Services were held every Sunday morning and also on Christmas Day. During 2013/14 the preaching and teaching on the Sunday services was covered by a number of speakers, and just one visitor. Sunday preaching was covered as follows: (previous year in brackets)

Internal Speakers

| | | | | | |
|--------------------------------|----|------|---------------------------|---|-----|
| Graham Hooke | 24 | (16) | Neil Kiley | 1 | (0) |
| Graham Hooke & Paul Jackson | 1 | (1) | Sarah Downie | 1 | (0) |
| Paul Jackson | 11 | (11) | Nigel Stewart | 1 | (0) |
| Paul & Jill Jackson | 1 | (2) | Every Generation Services | 5 | (?) |
| George Thomas | 4 | (2) | Baptismal Services | 2 | (0) |
| Lee-James Warren | 1 | (0) | Youth Services | 1 | (3) |
| Paul Richardson | 1 | (3) | Dedication Services | 2 | (2) |
| Derrick Bannister | 3 | (1) | Connect | 2 | (7) |
| Paul & Miriam Grave | 2 | (3) | | | |
| Ruth Hooke | 1 | (0) | | | |

Visiting Speakers

| | |
|-----------------------|---|
| Phil Stone (Scargill) | 1 |
|-----------------------|---|

In addition to the Sunday morning service the Splat and M2E Missional Worshipping Communities provide monthly services.

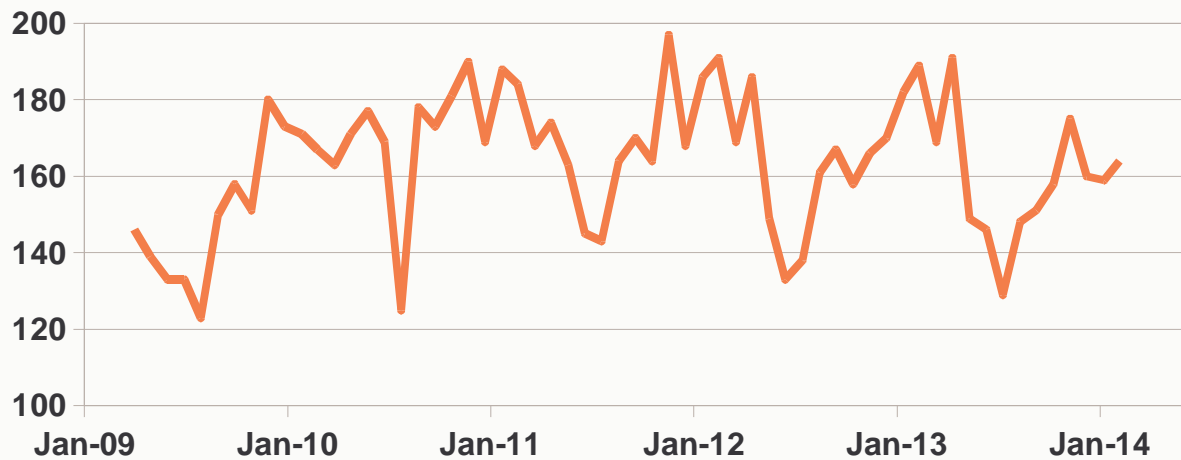
ii. Attendance trends April 2013 - March 2014

The following table shows average weekly attendance at the Sunday morning service.

| 13/14 month | Apr | May | Jun | Jul | Aug | Sep | Oct | Nov | Dec | Jan | Feb | Mar |
|---------------------------|------------|------------|------------|------------|------------|------------|------------|------------|------------|------------|------------|------------|
| Children | 33 | 30 | 33 | 33 | 17 | 30 | 32 | 34 | 49 | 30 | 33 | 37 |
| Adults | 131 | 117 | 111 | 113 | 112 | 127 | 119 | 124 | 145 | 131 | 127 | 127 |
| Total Congregation | 163 | 147 | 149 | 146 | 129 | 148 | 151 | 158 | 175 | 160 | 159 | 164 |

The following graph shows average monthly attendance at Sunday morning services between April 2009 and March 2014.

Attendance: Monthly Averages



iii. Change from Membership to Partners & Friends

This year we have made some significant changes in our membership for the first time in nearly 20 years.

Members Meetings are held twice yearly in March and October and include financial reports. This year our SMM was held later than usual on 12th May and our AMM was held on 13th October and attended by 50 members and 7 prospective new members.

This was to be our last Members meeting as, in early 2014, we transitioned to Partners & Friends. Instead of being "members of a club" we are inviting people to be "partners in mission".

The invitation to people to be "Friends of CCF" was first made on 5th January and a short talk about this made available on CD and on the church website. This is open to anyone regardless of faith and attendance.

The principles and commitments of being a "Partner of CCF" were taught on subsequent Sundays and these talks were made available as videos on the website. The commitments of Partnership centred around the UP IN OUT triangle:

1. A Place to Belong (IN)

As devoted followers of Jesus we commit ourselves to personal growth through prayer, Bible reading and active involvement in Calvary C.F. community life.

BELONG, GROW

(Devoted to Jesus, actively involved in community)

2. A God to Worship and Serve (UP)

As children of God we commit ourselves to using our particular gifts, skills, time and energy to serve God through the ministries of Calvary C.F., to support the leadership and work for peace in all relationships.

SERVE, SUPPORT

(Uniquely serving God in harmony with His people)

3. A Love to Share (OUT)

In appreciation of the goodness of God we commit ourselves to being generous in sharing Christ's love and supporting God's work through Calvary CF.

SHARE LIFE, GIVE

(Appreciating God's goodness, generous in every way)

The final membership list, at the end of 2013, totalled 150 members of whom 4 were serving away from the Church on International Mission.

Members, Partners & Friends - Facts and Figures

All Members were given a letter of explanation and a form and invited to become Partners or Friends of CCF.

128 members returned forms. Of these:

120 members became partners

8 members became friends (4 of these still attend CCF regularly, 2 moved away, 1 attends another church, 1 no longer attends church.)

22 members did not return forms. Of these:

4 members had moved away from the area.

8 members were not attending CCF much, if at all; 2 of these attending other churches.

2 members resigned to attend another church (unrelated to Partnership change).

8 members still attend/remain involved but have not yet returned forms.

The Senior Pastor is writing personally to the 14 members who have moved away/not attending/resigned to thank them for the previous involvement and commitment to CCF and wish them God's blessing, and following up the 8 people who are still have active involvement with CCF but have not yet returned forms.

Additionally 7 new people are joining the church as partners meaning that at the year-end our official partnership total is 127 with a probable maximum of 135 partners.

This is now a more realistic figure for the number of people actually committed to CCF than the previous figure of 150 members.

4. YOUTH AND CHILDREN

Trainee Youth Work Role

In May 2013 we advertised a twelve month, part time role of trainee youth worker. In June 2013 interviews were held and Lee-James Warren was appointed as Trainee Youth Worker to commence in September 2013. This role would mix experience of working with young people in church, school and community settings with support and learning as part of the New Wine Discipleship Year.

Youth Work

Youth is our Friday night term time youth club aimed at 11 – 16s. This club attracts young people from both church and local community and attendance varies between 20 and 50 young people.

Jailbreakers is a Sunday morning discipleship group for 11 – 14s.

5-2-7 is a new Sunday evening discipleship group that Lee-James Warren has initiated. It's focussed on the 14 – 17 age group. This group is still establishing itself.

The church has developed links with Lostock Hall Academy. Lee-James has had involvement in supporting RE lessons and assemblies. In addition Lee-James, along with staff from our CAP Centre has delivered Money Management Workshops to 250 year 8 and year 9 pupils.

In the period covered by this report there was no Youth Weekend Away. A Youth Weekend Away is planned for 4th – 7th April.

Children's Work

Calvary Kids is our Sunday morning activities for children aged 0s – 11s. Within that age range the following specific groups exist Bubbles (pre-schoolers), Splash (infants: reception – yr2) and XStream (juniors: yrs 3 – 6).

Surf is a fortnightly Friday night children's activity aimed at 6 – 11 year old church children who are encouraged to bring church friends along.

Safeguarding

There are approximately 50 people whose CRB checks are now 3 years old and are due for a new check. This will be done under the new system of DBS checks. We commenced using the online system during 2013.

Because of the large number of checks to be completed we have appointed two additional recruiters along with Graham Hooke, lead recruiter, to complete these checks during 2014.

Both new recruiters had previous experience of Safeguarding training and both attended DBS training at Fulwood Free Methodist on 12th October.

Internet Safety training for parents and children took place in July and September 2013, led by Shan Dobinson, trained by CEOP. (Child Exploitation & Online Protection Centre). Approx. 15 adults, both parents and leaders of CCF, attended the first session. The second training sessions, broken down by age groups, specifically for young people, was attended by approx. 25 children and young people.

5. COMMUNITY MISSION

The church aims to reach out to, connect with and serve the local community through different groups and initiatives.

Christians Against Poverty - Debt Help

Our church runs a Debt Help centre in partnership with the national charity Christians Against Poverty. Our centre has been operating since September 2008 and we've visited and worked with around 250 individuals or families.

In the 12 month period of this report our debt help centre has:

- made visits to 51 new clients
- helped 39 new clients activate a CAP account
- seen 14 clients become debt free.

Our centre was part funded by a very generous grant of £4800 from South Ribble Partnership.

Primarily our debt service involves our debt advisors meeting people in their homes. We still provide this service, but in July 2013 we started a fortnightly 'debt drop-in.' The debt drop-in was started to build stronger relationships between new and existing clients and the debt centre team of advisors and befrienders.

The Hub - Improving the Wellbeing of Individuals and Community

Through the summer and autumn of 2013 the church begin to discuss and develop a vision for The Hub. The Hub would be a place that provides help and support for local people in four different areas: debt and money advice, crisis food support, employment advice and housing advice. Our experience with the debt help centre means we encounter these four related issues again and again.

The Hub is developing slowly and our first move is to add employment advice to the debt advice provided by our church. Our aim is to start a CAP Job Club in partnership with King's Church, Penwortham. In March 2014 three people were trained as CAP Job Coaches and the CAP Job club is scheduled to launch in May 2014.

Jolly Tots

Each Wednesday in term time, **Jolly Tots**, a parents, carers and toddlers group reaches out and serves the local community, welcoming anyone with toddler-aged children. (led by Wendy & Kath Hodgson),

Ripples

The *Special Needs Dance Group* called Ripples has continued to run on a bi-monthly basis on Sunday afternoons.

Events

In addition to the above regular activities we ran the following one-off events to engage and connect with the local community or to support activities in our church.

We were part of Lostock Hall Carnival on 29th June

We hosted a Christian Vision for Men Day conference 13th July. Around 90 men attended.

Calvary Christian Fellowship
Trustees' Annual Report and Accounts 1 April 2013 to 31 March 2014

We organised and hosted a CCF Ladies Day 12th October, with around 90 women attending.

We organised and hosted a Craft Afternoon 23rd November. This was open to friends and members of the local community and between 250 and 300 people attended.

A number of concerts, arranged by the Creative Network, led by one of our members, were held at the Church or locally. Those held at CCF were:

Gareth Davies-Jones, workshop and concert, 27th April
Richard Gilewitz, workshop and concert, 14th September

These were particularly helpful and appreciated by budding and experienced musicians alike.

Another musical event in support of Uganda was held on March 8th. Several acts took part with musicians as young as 12, a school dance group, along with older performers, Steve & Martin Conway, well known to CCF.

Musicians and other members of the church participated in two community Carol Singing events in Lostock Hall in December 2013.

6. INTERNATIONAL MISSION

International Partners

Support through prayer, relationship and finance continues to be extended to the following people and ministries. A significant feature of much of the work we support is the care of abandoned and destitute children in Africa, India and Asia.

Steve and Mary Coates working with '**World Horizons**', based in South Wales.

Pastor Joshua Magezi and his church (Kibuli District, Kampala, Uganda). A major project that we have a special interest in is **Bulabakulu Children's Village** for abandoned children, home to 150 children and widows who act as carers.

Hannah Wang, working with '**World Horizons**' in Japan, establishing a church.

'Fountain of Life Ministries' and **Sundar & Sarah Pinninty** (supporting Pastor Swamydas Pinninty and family, involved in village evangelism, literacy and sewing centres in South India.). Their current major project is the building of a Home of Hope for abandoned children, completed in January 2013 and with the first children admitted in December 2013.

'Good Rock Foundation' working with orphanages and supporting foster care of children in China. **Jacqui Shurr**, the founder, is based in our church and travels to China occasionally to develop this ministry.

Support for International Partners

The Senior Pastor, is planning to bring together a small team to oversee our International Mission links and to encourage awareness of, support for, and involvement with these ministries in SGs and MWCs across the church. A first meeting of a prospective team was convened in November 2013 but only two of the invited leaders was able to attend. For the time being, the development of this team has been put on hold while priority is given to the development of the Discipleship Pathways oversight team.

Newsletters from our International Partners continue to be reproduced and distributed via the Bulletin whenever received. Information is also made available on the church website, although this has to be carefully restricted in some cases for the safety and well-being of our partners overseas.

The International Links Noticeboard is updated by the Senior Pastor. International Partners have been encouraged to produce a regular A4 highlights page for the Noticeboard, covering a 4/6/12 month period in advance so that information does not go out of date so quickly.

All international ministries were prayed for on Christmas Day and regularly at other Sunday services.

Each international partner has either a link person at CCF, or two or three supporters who maintain good contact with them.

Members of the church contributed significant quantities of clothing and useful goods in readiness for a container to be sent out to Uganda. A large trailer was filled with boxes and taken to Bradford to be added to items collected from elsewhere.

Calvary Christian Fellowship
Trustees' Annual Report and Accounts 1 April 2013 to 31 March 2014

Kath Hodgson, the Uganda Link Person, with support from Nigel Stewart, organised a successful music/dance evening in support of the Children's Village in Uganda on 8th March 2014, raising over £1,000.

In November, five people from CCF went to Bradford to hear an update about the Bulabakulu Children's Village in Uganda. A team from Sunbridge Road Mission Church had spent a week at the village in October.

Regular stalls are set up on Sundays which provide some additional income for Good Rock and Bulabakulu Children's Village, Uganda through the sale of goods.

Visits

The Pinninty Family (Fountain of Life) visited and reported to CCF in August 2013 and were present at CCF on one other occasion.

Jacqui Shurr (Good Rock Foundation) lives in the area and attends CCF regularly. She reported back to CCF about her work in the Autumn. A Good Rock event was also held at the church in early 2013.

Steve & Mary Coates (World Horizons, Europe) visited CCF in April 2013 when Steve preached and a further visit from them is planned for May 2014.

A visit from Hannah Wang (World Horizons, Japan) is expected in June 2014.

7. OPERATIONS

Communication - Friday Feed, Dropbox & Website

The weekly e-mail communication, Friday Feed, has continued and is now circulated to 122 people (2013 - 109). Friends of CCF are automatically added to this distribution list.

A team has been brought together to work with Andy Prosser and EWDP to design a new website for launch in May 2014.

The Sunday Church Programme, including some of the main rotas for Sunday teams, continues to be accessible through Dropbox.

Food Hygiene

Several members of the church were trained in Food Hygiene on 4th May 2013.

First Aid

Church has a list of qualified First Aiders who could be called upon for help in an emergency. In order to facilitate this we host occasional First Aid courses. The next First Aid course is planned for 28th May 2014.

The Church Administrator ensures that First Aid boxes are maintained, stocked up and out of date material is discarded.

Building management & Property

The Church Administrator, Karen Whaite, keeps a diary of all activities taking place in the building. Four members of staff hold a weekly meeting on Wednesdays, with one focus of attention being the co-ordination of all activities to avoid clashes in the use of rooms and to facilitate the Site Supervisor in setting up for activities efficiently and appropriately.

Additional activities have complicated the use of the building. It is unrealistic for the Site Supervisor to set up and clear away after activity. Group Leaders have always been expected to do their own set up for smaller activities. However, e.g. moving the larger chairs across the building is not feasible for all leaders.

At the Learning Community in October the Elders decided to do an assessment of Building Use. This was undertaken by Steve Whymark during November and contributed to decision making about possible initiatives involving the Double Bridges Centre.

Finding ways to use the building efficiently and minimising the work for volunteers remains an ongoing issue.

A significant tidy up and clear out of redundant equipment and rubbish in every area of the building took place in July 2013.

Finances

Phil McDermott, the church treasurer, administers the church finances and produces a monthly report for Elders and Trustees. The finances have become increasingly complex as church has received a few grants and specific gifts. Audited accounts are submitted for each year.

Relationship with other Charities and Organisations

The church is a member of the **Evangelical Alliance**.

The church is also part of the **New Wine network** of churches. The Pastors and spouses attend occasional meetings of the North West New Wine network. The church supports other New Wine events, such as New Wine Men's and Women's days. In addition a group of adults and children attended the New Wine Summer Conference in Newark.

The church co-operates locally with the three other Christian churches in Lostock Hall. Graham Hooke, the senior pastor, co-ordinates the quarterly meetings of the senior church leaders and he meets with the two other Lostock Hall clergy (Anglican/RC) to maintain relationships and further work together in any ways that we can.

The church has commenced working with Kings Church Penwortham and launched a Job Club. This was initiated by Paul Jackson, working with Mark Willett from Kings Church. More information about this can be found in the Community Mission section of this report.

Graham Hooke also attends an occasional study, support and prayer group with two local Baptist ministers (Tony Crawford and James Watterson).

Paul Jackson meets with a New Wine Core Group for a similar purpose.

Plans for the Future

Learning Communities

In October 2013 four of the five elders completed their participation in a Learning Community along with about 20 other church groups. This was led by a group known as 3DM working in conjunction with the Fresh Stream Network. The 3DM team are leaders from St Thomas' Philadelphia in Sheffield, a church of about 3,000 people, using discipleship and missional material developed by Mike Breen during his time in Sheffield and subsequently over a 15 year period.

We had committed to attending four Learning Communities over a two year period, each lasting three days.

These Learning Communities became the primary way for the Elders to assess, dream, plan and strategise the future of our church. At each session we set 2 year targets and 6 month goals. By continuing to participate in these Communities there has been a built-in accountability in which we have had to feedback our progress, both to the 3DM leaders and the wider group at each LC.

October 2012 6 month Goals

Write down leadership pipeline. (Completed, linked to Partners/Friends - to be revisited in Jan 2014)

Increase "life on life" in Elders Huddle (Elders have regular "huddles" at the start of their meetings)

Establish four Huddles (M2E, BETA, SPLAT, CAP) (These are now functioning)

Get the church to understand Person of Peace (was misunderstood - repeated in Feb)

Find a Youth Pastor (Ongoing as of March 2013)

February 2013 6 month Goals

Pilot 20s/30s MWC

Huddles - five currently, start two more.

Equipping Leaders - run session and plan more replicating Learning Community

Teach the Church the key concepts - Covenant and Kingdom

Clarify "Person of Peace" in the teaching.

Pastoral Care - publish a process.

October 2013 6 month Goals

Launch Mercy People, target 30 people.

Establish core team for 20s/30s

Equipping Leaders: All leaders to have attended at least one session

Match use of building to priorities - review proposals

Youth - establish discipleship of 15s-21s. Focus on 15s-18s.

Establish viable core group that's a hot centre

Delegate Operations, identify teams/leaders - aim for 4 done.

Two year goals (2015) are:

10 Missional Worshipping Communities

Missional Initiatives become Missional Communities

Mission Fruitfulness from "Person of Peace" relationships

Effective Leadership "Huddle" and potential missional leaders in Huddles.

Known and working process for raising up leaders.

Clarity and ownership of language

Elders will review their 2013 goals between May and July 2014 and set new goals for 2014/15.

Financial Review

Reserves Policy

The reserves policy of the Trustees is to maintain a level of unrestricted funds of three months salary costs of Senior Pastor and one months salary costs of other staff which totals £17,259. At the period end there are free reserves of £29,005 (Net current assets in unrestricted funds less designated funds). The designated funds relate to items of commitment in the next financial year for the charity. The reserves level is above that required.

Principal Funding Source

Calvary Christian Fellowship is wholly reliant on the donations of its membership. These donations and associated gift aid show a decrease of 9% on similar period of the previous year, but were sufficient to meet expenditure and exceed the required level of free reserves.

The trustees and elders monitor the income from donations on a regular basis and consider any action required to match the expenditure to the income. Other income results from the activities of the charity as detailed in Note 3.1 to the accounts. These activities are part of the church's outreach and are not intended to be fund raising.

Financial Support of Key Objectives

The funds are applied to paying the salaries of the employees of the charity, making grants to individuals and organisations, maintenance of the building, expenses of the small groups and streams of the church and Sunday services. These payments are detailed in the accounts. In the current year 63% of expenditure was staffing costs. This provides two full time Pastors and additional support staff, two part time Christians against Poverty (CAP) worker and a part time Youth Worker. The Pastors are responsible for providing the main teaching and spiritual guidance to the church. This helps to fulfil the main objective of the church to spread the gospel. 20% of expenditure went in grants. The church is committed to seeing the gospel reach beyond its locality. This is achieved by supporting other charities and individuals involved elsewhere in Great Britain and overseas.

Grant-making Policy

The church plans to give away a significant proportion of its income in accordance with biblical teaching. These gifts go to other organisations working at home and abroad to further God's Kingdom. In accordance with the trust deed some smaller grants are made to mitigate financial hardship. These are normally to church members. Support is also provided to members to enable them to follow God's calling. This can include full time mission or for set periods. Details of the grants made are given in Note 3.4 to the accounts.

Funds Review

The assets in the Unrestricted Fund (General Fund) of the charity are held at the trustees' discretion for the future needs of the church. Note 11 to the accounts details the designated funds included within the unrestricted fund.

The funds in the Restricted Fund are for named individuals or organisations. The total value of these funds at the period-end is £22,680.

Calvary Christian Fellowship
Trustees' Annual Report and Accounts 1 April 2013 to 31 March 2014

The charity has sufficient assets to meet its current liabilities.

The building at Ward Street was revalued in November 2003 at £175,000. This revaluation figure has been included in these financial statements.

Trustees' responsibilities in relation to the financial statements

Law applicable to charities in England and Wales requires the trustees to prepare financial statements for each financial year which give a true and fair view of the charity's financial activities during the year and of its financial position at the end of the year. In preparing those financial statements, the trustees are required to:

- select suitable accounting policies and then apply them consistently;
- make judgements and estimates that are reasonable and prudent;
- state whether applicable accounting standards and statements of recommended practice have been followed, subject to any departures disclosed and explained in the financial statements; and
- prepare the financial statements on a going concern basis unless it is inappropriate to presume that the charity will continue in operation.

The trustees are responsible for keeping accounting records which disclose with reasonable accuracy at any time the financial position of the charity and enable them to ensure that the financial statements comply with the Charities Act 1993. They are also responsible for safeguarding the assets of the charity and hence for taking reasonable steps for the prevention and detection of fraud and other irregularities.

Approved by the trustees on and signed on their behalf by:

P Richardson
Chairman

M Headley
Trustee

Independent Examiner's Report to the Trustees of Calvary Christian Fellowship

I report on the accounts of the Trust for the year ended 31 March 2014, which are set out on pages 29 to 36.

Respective Responsibilities of trustees and examiner

The charity's trustees consider that an audit is not required for this year (under section 43(2) of the Charities Act 1993 (the Act), as amended by s.28 of the Charities Act 2006) and that an independent examination is needed. It is my responsibility to: examine the accounts (under section 43 of the Act, as amended).

to follow the procedures laid down in the General Directions given by the Charity Commission (under section 43(7)(b) of the Act, as amended), and

to state whether particular matters have come to my attention.

Basis of independent examiner's statement

My examination was carried out in accordance with the General Directions given by the Charity Commission. An examination includes a review of the accounting records kept by the charity and a comparison of the accounts presented with those records. It also includes consideration of any unusual items or disclosures in the accounts, and seeking explanations from the trustees concerning any such matters. The procedures undertaken do not provide all the evidence that would be required in an audit, and consequently I do not express an audit opinion on the accounts.

Independent examiner's statement

In the course of my examination, no matter has come to my attention

1. which gives me reasonable cause to believe that, in any material respect, the trustees have not met the requirements to ensure that:
2. proper accounting records are kept (in accordance with section 41 of the Act); and
3. accounts are prepared which agree with the accounting records and comply with the accounting requirements of the Act; or
4. to which, in my opinion, attention should be drawn in order to enable a proper understanding of the accounts to be reached.

JA Fell
Chartered Accountant
White Cross
South Road
Lancaster
LA1 4XQ

Date:

Statement of Financial Activities for the year ended 31st March 2014

Calvary Christian Fellowship (Preston)

Statement of Financial Activities for the year ended 31st March 2014

| Note | General Fund £ | Restricted Funds £ | Total Mar 2014 £ | Total Mar 2013 £ |
|---|-------------------|-----------------------|---------------------|---------------------|
| Incoming Resources: | | | | |
| 2 Voluntary Income | 172,268 | 21,780 | 194,048 | 213,726 |
| Investment Income - Bank Interest | 52 | - | 52 | 42 |
| 3 Proceeds of church activities | 789 | - | 789 | 696 |
| Total Incoming Resources | 173,109 | 21,780 | 194,889 | 214,464 |
| Resources Expended: | | | | |
| 3 Charitable Activities | 166,195 | 29,080 | 195,275 | 191,855 |
| 4 Governance | 615 | - | 615 | 610 |
| Total Resources Expended | 166,810 | 29,080 | 195,890 | 192,465 |
| Net Incoming Resources | 6,299 | (7,300) | (1,001) | 21,999 |
| Fund Balances brought forward 01/04/2013 | 205,390 | 30,980 | 236,370 | 214,371 |
| Fund Balances carried forward 31/03/2014 | 211,689 | 23,680 | 235,369 | 236,370 |

The notes on pages 31 to 36 form part of these accounts.

Balance Sheet at 31st March 2014 Calvary Christian Fellowship (Preston)

Balance Sheet at 31st March 2014

| Note | March 2014 | | March 2013 | |
|------------------------|------------|----------------|------------|----------------|
| | £ | £ | £ | £ |
| Fixed Assets: | | | | |
| 7 | | 182,654 | | 183,540 |
| Current Assets: | | | | |
| 8 | | 11,214 | | 12,485 |
| | | 376 | | 595 |
| | | 44,012 | | 42,373 |
| | | <u>55,602</u> | | <u>55,453</u> |
| Liabilities: | | | | |
| 9 | | (2,887) | | (2,623) |
| | | | | |
| | | 52,715 | | 52,830 |
| | | | | |
| | | <u>235,369</u> | | <u>236,370</u> |
| Funds | | | | |
| 10 | | 23,680 | | 30,980 |
| | | 211,689 | | 205,390 |
| | | <u>235,369</u> | | <u>236,370</u> |

For the financial period ended 31 March 2014 the company was entitled to exemption from audit under section 477 Companies Act 2006. No member of the company has deposited a notice, pursuant to section 476, requiring an audit of these financial statements under the requirements of the Companies Act 2006.

The directors acknowledge their responsibilities for ensuring that the company keeps accounting records which comply with section 386 of the Act and for preparing financial statements which give a true and fair view of the state of affairs of the company at the end of the financial year and of its net incoming resources for the financial year in accordance with the requirements of the Companies Act 2006 relating to accounts, so far as applicable the company.

These financial statements have been prepared in accordance with the provisions applicable to companies subject to the small companies regime within Part 15 of the Companies Act 2006 and with the Financial Reporting Standard for Smaller Entities (effective April 2008).

Approved by the Board for issue on

.....
Mr P McDermott - Director

Company Registration No. 07223694

The notes on pages 31 to 36 form part of these accounts.

Notes to the accounts 31st March 2014

Calvary Christian Fellowship (Preston)

Notes to the accounts 31st March 2014

1 Accounting Policies

- a These accounts have been drawn up under the historical cost convention, as modified by the inclusion of fixed assets at market value. They have been prepared in accordance with the Statement of Recommended Practice (SORP) "Accounting and Reporting by Charities" published by the Charity Commissioners revised 2005, the Financial Reporting Standard for Smaller Entities (effective 2008) and applicable accounting standards.

Resources expended have been analysed by activities. Where costs are not directly attributable to a single activity they have allocated by estimation as follows;

- Pastors' salaries & associated expenses: Pro rata time spent on each activity based on assessment by both pastors.
- CAP Workers salary and expenses analysed by activity.
- All other staff & support costs: Pro rata estimated of use of building for each activity.

- b Gifts and other income are credited on a receivable basis. The tax recoverable on Gift Aid appears as a debtor in these accounts.

Resources expended have been accounted for on an accruals basis.

c Revaluation of Assets

A valuation of the Ward Street premises, on the basis of open market value with vacant possession, was prepared by HDAK, Commercial Property Consultants, on 11 November 2003. This valuation at £175,000 is incorporated in the financial statements for the current year.

The land at Watkin Lane was revalued at 31st March 1998 by the trustees.

Blinds, carpets, alarm, Gas cooker and similar items are excluded from the Schedule of assets and are deemed to be included in the valuation of the building.

d Fund Accounting

Funds held by the charity are either:

Unrestricted General Funds - funds which can be used in accordance with the charity's objects at the discretion of the trustees.

Designated Funds - funds set aside out of the general fund for specific purposes.

Restricted Funds - funds that can only be used for particular restricted purposes within the objects of the charity. Restrictions arise when specified by the donor or when funds are raised for particular restricted purposes.

All running and maintenance costs in connection with the Fellowship's property are paid out of the General Fund.

e Depreciation is charged on net present value as follows:

- Equipment, furniture and fittings: 25%
- Land & Building: In the opinion of the Trustees depreciation is immaterial.

1 Accounting Policies (continued)

- f Depreciation is charged in full in the year of acquisition and none in the year of disposal.
- g Only tangible items exceeding £500 purchase price are treated as balance sheet assets. Assets with a net book value of less than £100 have been written off although they are still in use.
- h All income and expenses are shown in full and not "netted off".
- j Connected persons:
Trustees who are members of the church have contributed to the charity's income by way of gifts and gift aid.

No trustees received any reimbursement for expenses or services.

Calvary Christian Fellowship (Preston)

Notes to the accounts 31st March 2014

| | General Fund | Restricted Funds | Total 2014 | Total 2013 |
|--|--|----------------------|----------------------|------------------------|
| 2 Donations | | | | |
| Gifts | 31,459 | 13,986 | 45,445 | 67,497 |
| Gift Aid | 140,809 | 7,794 | 148,603 | 146,229 |
| Total Donations | 172,268 | 21,780 | 194,048 | 213,726 |
| 3 Charitable Activities - Explanation & allocation of costs | | | | % Pastors' time |
| Church Events | Sunday worship meetings and associated expenses for resources, media etc. | | | 43 |
| Community Outreach | KidzKlub, Jolly Tots, Shop & social events for local community. Local grant making | | | 11 |
| Prayer and Pastoral | Prayer meetings, training & associated insurance for Pastoral care | | | 11 |
| Disciple and Witness | Alpha, Cells, Family time, Books, CD & DVD provision & associated training. Non local & overseas grant making. | | | 23 |
| Youth and Children | Sunday school, Rock Solid, Youth cell, Child protection costs. | | | 12 |
| 3.1 Charitable Activities - Income | | | Total 2014 | Total 2013 |
| Church Events | | | 497 | - |
| Community Outreach | | | 122 | 405 |
| Disciple and Witness | | | 170 | 279 |
| Youth and Children | | | - | 12 |
| Total | | | 789 | 696 |
| 3.2 Charitable Activities - Expense | | Total 2014 | | Total 2013 |
| | Directly undertaken | Grant funding | Support costs | Total |
| Church Events | 46,773 | - | 8,469 | 55,242 |
| Community Outreach | 21,622 | 5,838 | 2,789 | 30,249 |
| Prayer and Pastoral | 11,890 | - | 1,859 | 13,749 |
| Disciple and Witness | 31,065 | 34,116 | 1,859 | 67,040 |
| Youth and Children | 24,347 | - | 4,648 | 28,995 |
| Totals | 135,697 | 39,954 | 19,624 | 195,275 |
| 3.3 Directly undertaken activities | | | Total 2014 | Total 2013 |
| Staff costs | | | 123,824 | 112,875 |
| Other costs | | | 11,874 | 11,248 |
| Total | | | 135,698 | 124,123 |

3.4 Grant funded activities

Purpose: All grants are made to further the gospel

| | Total 2014 | Total 2013 |
|--|-------------------|-------------------|
| Institutional | | |
| Africa Life Church & Children's Village (5 payments) | 3,230 | 8,460 |
| Christians Against Poverty (17 payments) | 11,675 | 10,529 |
| Fountain of Life Ministries (29 payments) | 3,113 | 9,930 |
| Fusion Youth (12 payments) | 575 | 525 |
| Good Rock Foundation (12 payments) | 2,839 | 2,520 |
| World Horizons (24 payments) | <u>8,856</u> | <u>8,634</u> |
| Total Institutional Grants | 30,288 | 40,598 |
| Individual | | |
| Grants to individuals (79 separate grants) | <u>8,868</u> | <u>8,419</u> |
| Total Grants | 39,156 | 49,017 |

3.5 Activity support costs

| | Total 2014 | Total 2013 |
|--|-------------------|-------------------|
| Building Repair & Maintenance | 5,884 | 5,817 |
| Utilities | 5,854 | 5,062 |
| Depreciation | - | 1,180 |
| Stationery, Post, Phone, Web and Admin | 4,358 | 2,936 |
| Insurance | 2,300 | 2,112 |
| Subscriptions | 197 | 196 |
| Licence fees | <u>1,032</u> | <u>1,011</u> |
| Total | 19,625 | 18,314 |

4 Governance

| | Total 2014 | Total 2013 |
|-----------------|------------|------------|
| Examiner's Fees | <u>615</u> | <u>610</u> |
| | 615 | 610 |

5 Staff costs

| | Total 2014 | Total 2013 |
|------------------------------|--------------------|--------------------|
| Salaries | 104,126 | 93,496 |
| NIER | 7,693 | 7,446 |
| Pensions | 4,769 | 7,244 |
| Expenses | <u>7,236</u> | <u>4,689</u> |
| Total staff costs | 123,824 | 112,875 |

Average number of employees was:

| | |
|--|--|
| Pastoral staff | 2 (full time) |
| CAP Worker | 2 (part time - Second worker from October 2012) |
| Administrative /Site supervisory/Cleaning staff | 3 (part time) |

All employees are engaged solely in Charitable activities

No employee earned £60,000 p.a. or more.

6.1 Defined contributions pension scheme

All employees are entitled to a contribution of 5% of gross salary into a Stakeholder Pension Scheme of their own choice. Two members of staff have chosen to take an extra 5% salary in lieu.

| | Total 2014 | Total 2013 |
|---|------------|------------|
| The costs of the scheme to the charity for the year | 4,769 | 7,244 |
| The amount of contributions outstanding at the year end | 239 | - |

7 Fixed Asset Schedules

Cost or valuation:

At 1 April 2013 & 31 March 2014

| | Freehold land and buildings | Plant & Equipment | Totals |
|--|-----------------------------------|----------------------|---------|
| | 180,000 | 21,339 | 201,339 |

Accumulated Depreciation

At 1 April 2013

Charge for year

At 31 March 2014

| | | | |
|--|---|--------|--------|
| | - | 17,799 | 17,799 |
| | - | 886 | 886 |
| | - | 18,685 | 18,685 |

Net book values

At 1 April 2013

At 31 March 2014

| | | | |
|--|---------|-------|---------|
| | 180,000 | 3,540 | 183,540 |
| | 180,000 | 2,654 | 182,654 |

8 Debtors

Income tax recoverable

Prepayments

Total Debtors

Total 2014 **Total 2013**

7,749 7,311

3,465 5,174

11,214 **12,485**

9 Liabilities: amounts falling due within one year

Accruals

Total

Total 2014 **Total 2013**

2,887 2,623

2,887 **2,623**

Calvary Christian Fellowship
Trustees' Annual Report and Accounts 1 April 2013 to 31 March 2014

| 10 <u>Restricted funds</u> | Balance 31st March 2013 | Movement in Resources | | Balance 31st March 2014 |
|---|--|------------------------------|-----------------|--|
| | | Incoming | Outgoing | |
| CAP Donations | - | 1,283 | 1,283 | - |
| CAP Client aid | - | 1,128 | 1,128 | - |
| CAP Debt Advisor (CAP Grant F) | 99 | - | 99 | - |
| CAP Debt Advisor (CAP Grant SRP) South Ribble Partnership Community Bids Fund | 2,903 | - | 2,903 | - |
| CAP DAS (Debt Advisor Salary) | 15,004 | 123 | 7,258 | 7,869 |
| Child Sponsorship/Children's Village | - | 1,938 | 830 | 1,108 |
| Food Hygiene Course | 50 | 90 | 120 | 20 |
| Fountain of Life Ministries | 38 | 818 | 763 | 93 |
| Good Rock | - | 151 | 139 | 12 |
| Individual Gifts | 93 | 3,909 | 3,400 | 602 |
| Joshua Magezi | - | 269 | 250 | 19 |
| Living on the Edge | 794 | 120 | - | 914 |
| Mission & Community | - | 5,000 | - | 5,000 |
| Scargill House | - | 38 | 38 | - |
| Splat | - | 13 | - | 13 |
| Youth Weekend Away | - | 1,653 | - | 1,653 |
| Youth Worker | 12,000 | 500 | 7,119 | 5,381 |
| Boiler replacement | - | 3,750 | 3,750 | - |
| Total Restricted Funds | 30,981 | 20,783 | 29,080 | 22,684 |

Purpose of Restricted Funds

Restricted Funds represent donations given specifically for a particular organisation, or for a particular purpose.

| 11 <u>Designated Funds</u> | Balance 31st March 2013 | Movement in resources | | Balance 31st March 2014 |
|-----------------------------------|--|------------------------------|-----------------|--|
| | | Incoming | Outgoing | |
| Coates TEFL | 30 | - | - | 30 |
| Total Designated Funds | 30 | - | - | 30 |

These funds are included in the general fund, but have been set aside for particular purposes.

| 12 <u>Analysis of Net Assets between Funds</u> | Tangible Fixed Assets | Net Current Assets | Total |
|---|--------------------------------------|-------------------------------|----------------|
| Unrestricted Funds | 182,654 | 29,035 | 211,689 |
| Restricted Funds: | - | 23,680 | 23,680 |
| Total | 182,654 | 52,715 | 235,369 |